

MONTY'S HAY & PASTURE PROGRAM

THE BETTER WAY TO BETTER HAY

GIVE YOUR HAY AND PASTURE FIELDS THE BEST PROGRAM FOR SUCCESS!

Monty's has developed a unique program specifically designed to maximize your hay and pasture yields this season. Monty's products...

- ✓ Can be foliar-applied, providing readily available plant nutrients.
- ✓ Include a 7-9-5 analysis with Sulfur, Iron and Zinc.
- ✓ Provide energy for the plant and a food source for microbes. Plus, with Agri-N you get 14% Nitrogen.
- ✓ Promote root development for sustainability and plant growth.
- ✓ Reduce compaction, while promoting root development and moisture retention.
- ✓ Promote conversion of organic matter, releasing nutrients to your field.
- ✓ Can be applied with most herbicides.*

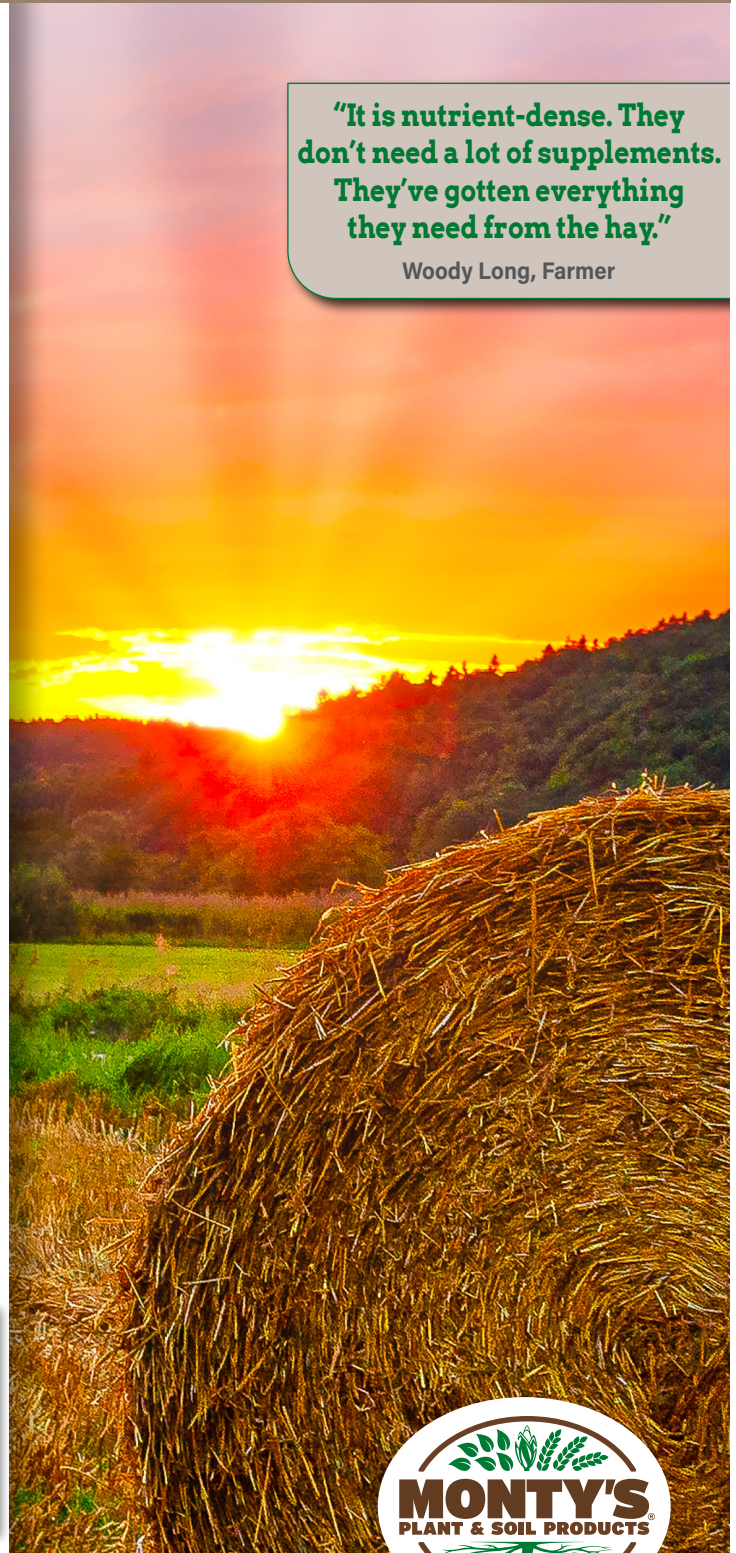
Talk to your Monty's representative today about how our Hay & Pasture Program can help you be more successful this season. Monty's ... Healthier soils. Healthier crops. Higher ROI!



**TARGET PROBLEMS TODAY WITH
MONTY'S PROVEN NUTRIENT SOLUTIONS**

"It is nutrient-dense. They don't need a lot of supplements. They've gotten everything they need from the hay."

Woody Long, Farmer



montysplantfood.com • 800.978.6342

MONTY'S HAY & PASTURE PROGRAM

HAY FIELD APPLICATION: Monty's 3-product program is applied before 1st cutting when field begins to green-up, then again after each cutting, allowing 3 to 4 inches regrowth for adequate leaf surface for intake. This liquid program makes the necessary plant food immediately available to the plant.

PASTURE APPLICATION: Monty's 3-product program is applied after field begins to green-up, then again after 30 to 45 days depending on number of cattle grazing the field, allowing regrowth of 3 to 4 inches for adequate leaf surface for intake. Application frequency and quantity will depend upon the number of head per acre.

Can be applied with most pesticides, fungicides, herbicides, or fertilizer applications.*

- ▶ **Hay-Now/C795 Plus** - A concentrated, versatile liquid plant food with NPK and other essential nutrients.
- ▶ **Monty's Liquid Carbon (MLC)** - Contains Monty's proprietary activated humic technology. It is a soil conditioner designed to reduce soil compaction and improve overall soil health. MLC provides a catalyst for release and conversion of soil nutrients.
- ▶ **Agri-Sweet FG/Agri-N (sugar plus 14% nitrogen)** - A highly refined carbohydrate that is a food source for the soil biology, increasing their numbers and activity which promotes the exchange of sugars, enzymes, and hormones with the plant root system.

Hay-Now/C795 Plus

Directions for use

- Foliar apply anytime from early spring green-up through fall. If cutting, apply after every cutting with 2-3 inches of re-growth. If grazing, apply every 30-45 days. Suggested application rate is 2 quarts per acre. For use on all grass, hays, and legumes. Winterize your hay and pasture fields with 2 quarts in the late fall.
- Best if used with other Monty's products including starters, foliars, micronutrients, and biologicals.

Monty's Liquid Carbon (MLC)

Directions for use

- For general soil conditioning, apply 2 quarts per acre directly to soil in fall and early spring. May also be applied at the same rate at pre-plant, planting, or for residue management. Apply 2 quarts per acre when foliar applying with liquid nitrogen or other fertility products.
- Best if used with other Monty's products including starters, foliars, micronutrients, and biologicals.

Agri-Sweet FG/Agri-N

Directions for use

- Soil applied at 2 quarts per acre.
- Best if used with other Monty's products including starters, foliars, micronutrients, and biologicals. Ask your representative about specialized programs.
- See label for more detailed information.

**WORKS GREAT
ON FOOD PLOTS**

COST OF HAY & PASTURE PROGRAM

COST OF HAY & PASTURE PROGRAM†:

275 gal Totes: \$19.98 / 30 gal Drums: \$21.47 / 2.5 gal Jugs: \$23.60

Cost is per application, based on 2 qts/ac each of the 3 products.

To enhance yield goals or if additional nutrients are required (based on soil and/or tissue samples), add **K28 Liquid Potash, Sulfur 15, or Microhance** (micronutrient package) – each at 2 qts/ac.

Monty's Programs' product and application rate recommendations are intended to serve as a base to achieving your yield goals. We recommend that soil tests be done prior to planting new crops. In subsequent years, you should take soil tests, along with petiole samples, to determine nutrient levels. Additional products, product substitutions, and/or adjustments to application rates may be necessary based on soil test results, weather conditions, and insect/disease pressure for nutrient and stress management. Consult your Monty's representative for guidance.

For more information, contact your Monty's representative, visit montysplantfood.com, or call 800.978.6342

Please check your state and local laws to determine whether restrictions on the use of phosphorus fertilizers apply to your operation.

† Prices are subject to change contingent on the market. Please consult your Monty's representative for current pricing.

* For compatibility or specific application information, please refer to product label.



montysplantfood.com • 800.978.6342