

Emerging Tobacco Issue

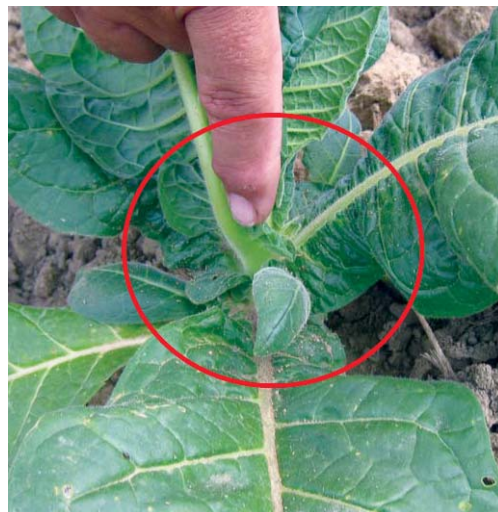
Looking at tobacco fields we are beginning to see tobacco plants showing SUCKERS off the stem, mostly at the base.

What Caused this to happen. Primarily early cool temperatures or too much clipping prior to planting. These factors are resulting in the plant putting out the suckers.

What can we DO?

Begin Spraying Monty's 2-15-15 at 1 pint/ac +1 pint of Soil Conditioner weekly or every 10 days to 2 weeks to help the MAIN Plant to grow as much as possible.

The Tobacco Plant may very well decide to start blooming early this year due to the early cool temperatures as well as the stress of the HOT dry weather we're now experiencing. *So by spraying weekly or every 10 days to 2 weeks you will help maximize the plant to grow increased root structure and greater leaf integrity as well as added weight.*



For more information call (800) 978-6342